

DanubeHIS

Danube River Basin
Hydrological Information System

ICPDR IKSD

International Commission
for the Protection
of the Danube River
Internationale Kommission
zum Schutz der Donau

WMO Workshop (WHOS Hydrological Data Exchange Training)

ICPDR - DanubeHIS

Deutschland // Österreich // Česká republika // Slovensko // Magyarország // Slovenija // Hrvatska // Bosna i Hercegovina // Srbija // Crna Gora // România // България // Moldova // Україна

Alex Höbart & Zoran Major
25 January 2024, online

ABOUT US

Content pages

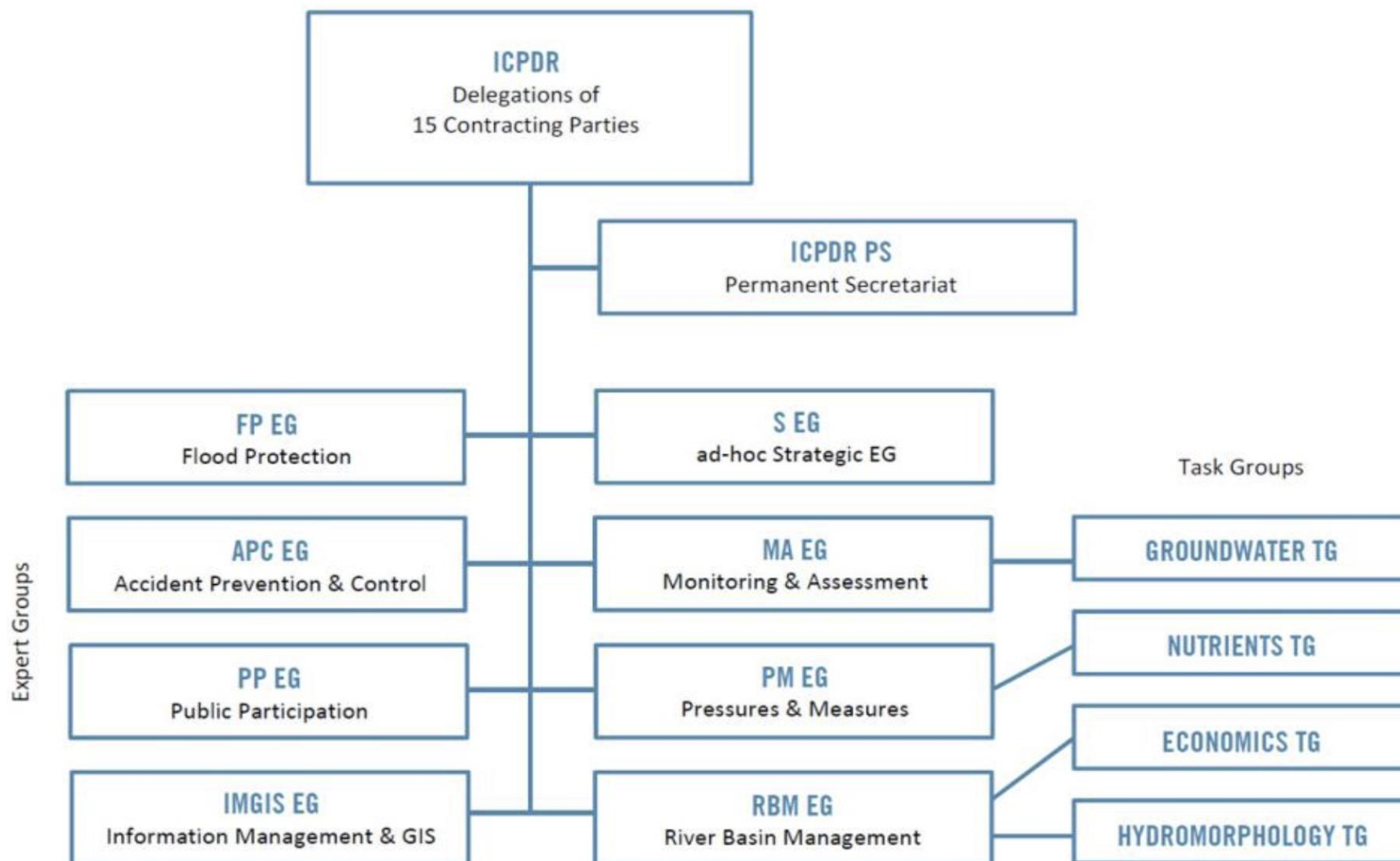
The International Commission for the Protection of the Danube River (ICPDR) works to ensure the sustainable and equitable use of waters in the Danube River Basin. The work of the ICPDR is based on the Danube River Protection Convention (DRPC), the major legal instrument for cooperation and transboundary water management in the Danube River Basin.

- Implementation of ICPDR responsibilities is supported and coordinated by the permanent secretariat in Vienna
- Specific activities are managed by the Expert Groups (EG) each including the representatives from 15 Contracting Parties

ICPDR organisational chart

ICPDR IKSD

International Commission
for the Protection
of the Danube River
Internationale Kommission
zum Schutz der Donau



Danube River Basin From the Black Forest to the Black Sea

ICPDR IKSD

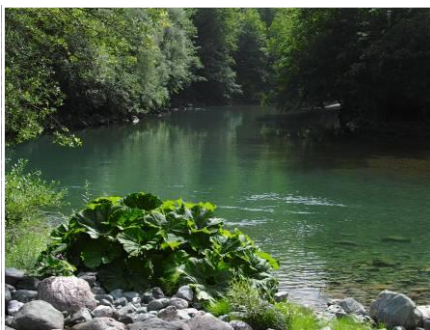
International Commission
for the Protection
of the Danube River

Internationale Kommission
zum Schutz der Donau



Danube River Protection Convention

signed 29 June 1994, Sofia (Bulgaria)



**Protection of water &
ecological resources**



**Sustainable use
of water**



**Reduce nutrients &
hazardous**



**Manage floods
& ice hazards**



**ICPDR coordinates implementation of EU
Water Framework Directive & EU Floods
Directive on basin-wide level**

Secretariat and the Expert Groups

ICPDR IKSD

International Commission
for the Protection
of the Danube River

Internationale Kommission
zum Schutz der Donau

DanubeHIS: Basic Facts

- Strategic guidance by ICPDR Flood Protection Expert Group (FP EG)
- Support by ICPDR Information Management & GIS Expert Group (IMGIS EG) for integration with DanubeGIS (stations metadata and background layers)
- DAREFFORT project provided software for data exchange
- System development and operation by ICPDR Secretariat
- Countries (via FP EG) nominated DanubeHIS stations
- DanubeHIS portal launched end of 2023

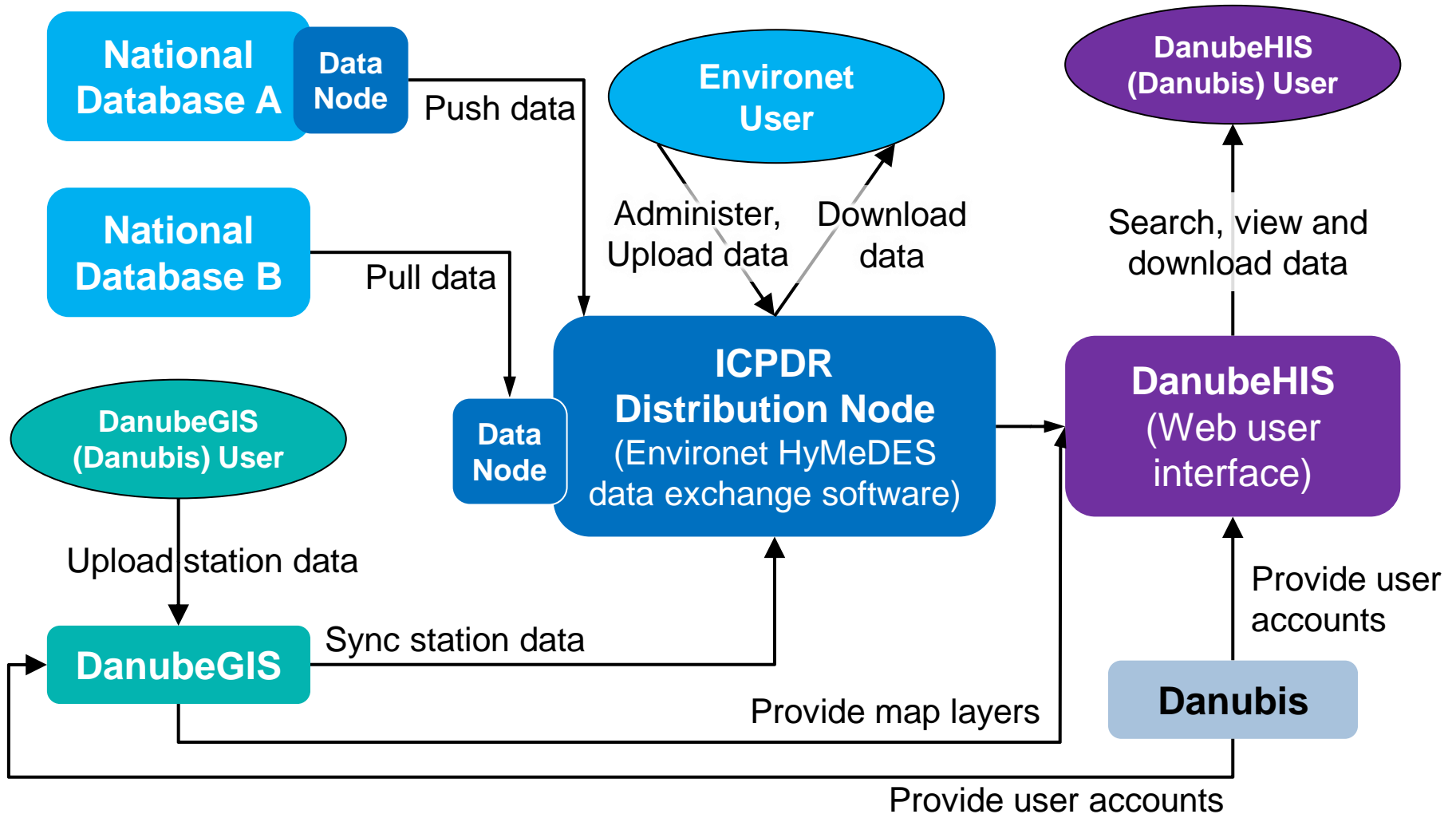
DanubeHIS Data Policy

- Based on the core principle of voluntary data exchange, the policy is designed to support the continuous and long-term cooperation of Data Providers using well-defined, flexible and stable data exchange platform.
- This Policy provides conceptual principles, as well as technical details required for exchange and interoperability of hydro-meteorological data in the Danube River Basin.
- DanubeHIS Data Policy document was developed by ICPDR Secretariat, then carefully discussed in FP EG, approved and signed by ICPDR and by all of the Data Providers.

DanubeHIS System Overview



International Commission for the Protection of the Danube River
Internationale Kommission zum Schutz der Donau



DanubeHIS Data Providers Overview



International Commission
for the Protection
of the Danube River

Internationale Kommission
zum Schutz der Donau

Country	Data provider	Option*	Method	Format	HYDRO	METEO
AT	BMLRT	B	HTTPS	xml	x	x
BA	AVPS	B	FTP	zrxp	x	x
BA	FHMZ	B	FTP	zrxp	x	x
BA	RHMZRS	B	FTP	zrxp	x	x
BG	NIMH	B	FTPS	csv	x	x
CZ	CHMI	B	FTP	xml	x	x
DE	DWD	B	HTTPS	csv		x
DE	LfU	B	HTTPS	xml	x	x
HR	DHMZ	A	FTP	csv	x	x
HU	OVF	A	local file	csv	x	
MD	SHS	B	FTP	csv	x	x
RO	NIHWM	A	FTPS	csv	x	x
RS	RHMSS	A	HTTP	csv	x	x
SI	ARSO	B	HTTP	xml	x	x
SK	SHMU	B	HTTPS	xml	x	x
UA	UHMI	A	local file	csv	x	x

*Option A: Data Node including conversion filter on provider's server configured for pushing data

Option B: Conversion Plugin including conversion filter on the Distribution Node configured for pulling data

DanubeHIS

Observed Properties



International Commission
for the Protection
of the Danube River

Internationale Kommission
zum Schutz der Donau

Symbol	Unit	Description	Type
h_mean_daily	cm	Daily mean water level	processed
Q_mean_daily	m ³ /s	Daily mean river discharge	processed
tw_mean_daily	°C	Daily mean water temperature	processed
h	cm	Current water level	real time
Q	m ³ /s	Current river discharge	real time
tw	°C	Current water temperature	real time
P_total_daily	mm	Total precipitation within a day	real time
P_total_hourly	mm	Total precipitation within an hour	real time

DanubeHIS Manual for Data Providers

DanubeHIS Manual for Data Providers

Note: this manual is not yet complete and will be further elaborated

Document number:
Version:
Date:



Table of content

1. Distribution Node

- 1.1 Purpose
- 1.2 Accessing the administration panel
- 1.3 Uploading processed or missing data
 - 1.3.1 Configuring monitoring points
 - 1.3.2 Preparing data file
 - 1.3.3 Uploading data file
- 1.4 Defining measurement access rules
- 1.5 Defining threshold values (Q100, Low water level)
- 1.5.1 Configuring threshold levels
- 1.5.2 Setting threshold values for stations
- 1.6 Bulk editing of multiple monitoring points

2. DanubeHIS Portal

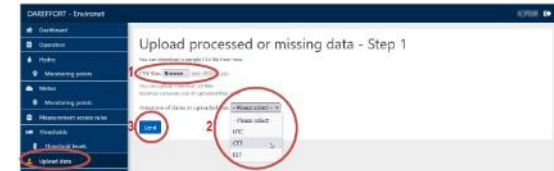
- 2.1 Purpose
- 2.2 Access the portal

3. Annex 16

- 3.1 Observed properties defined in DanubeHIS

1.3.3 Uploading data file

1. On the page "Upload processed or missing data" (same as in previous chapter), click on the **Browse...** button and select the previously prepared data file from your local file system. You may select multiple files in one step.

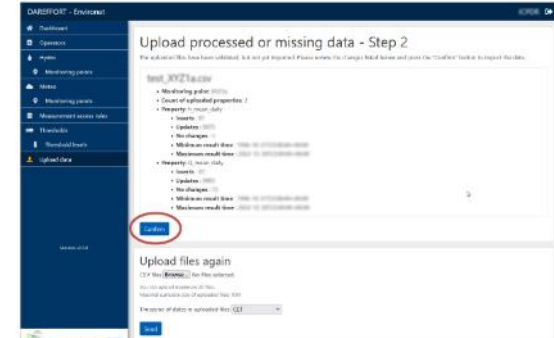


2. Select the time zone used in the uploaded data files:

- UTC = Coordinated Universal Time
- CET = Central European Time (without summertime) = UTC + 1 hour
- EET = Eastern European Time (without summertime) = UTC + 2 hours

3. Next, click the **Send** button to start the upload, validation and import process.

If the file was validated successfully, you will see the following message and overview of changes which will take place on import.



Measurement access rules



International Commission
for the Protection
of the Danube River
Internationale Kommission
zum Schutz der Donau

Access to data is defined by the data providers

A screenshot of the ICPDR Administrator web interface. The top navigation bar is dark blue with 'DAREFFORT - Environet' on the left and 'ICPDR Administrator' with a right-pointing arrow on the right. A dark blue sidebar on the left contains a list of menu items: Dashboard, Users, Groups, Operators, Hydro, Monitoring points, Observed properties, Rivers, Station classifications, Riverbanks, Results, Meteo, Monitoring points, Observed properties, Station classifications, Results, Measurement access rules (highlighted in yellow), Warning levels, Warning levels, Warning level groups, and River basins. The main content area is white and titled 'Edit measurement access rule: #38'. In the top right corner of this area is a 'Back to list' button. The form contains several sections: 'Operator' with a dropdown menu showing 'State Institute for the Environment Baden-Württemberg (LUBW)'; 'Monitoring point selector' with a text input field containing '- All - x' and a '+' button; 'Observed property selector' with a text input field containing '- All - x' and a '+' button; 'Groups' with a text input field containing 'Public Download x' and a '+' button; and 'Time interval' with three dropdown menus for 'Years' (set to 2), 'Months' (set to 0), and 'Days' (set to 0). At the bottom left of the form is a blue 'Save' button.

Summary of user roles and access permissions

Permission	User roles			
	Anonymous	Self-registered	Internal	Administrator
View stations	All active stations		All stations	
Select properties	Properties listed in Policy		All properties	
View measurements	According to measurement access rules		All	
Download measurements	None	According to measurement access rules		All

**Measurement
Access Rules
Groups:**

Public View

Public Download

Internal Download

Station metadata availability



International Commission
for the Protection
of the Danube River
Internationale Kommission
zum Schutz der Donau

AT	BA	BG	CZ	DE	HR	HU	MD	ME	RO	RS	SI	SK	UA	Total
----	----	----	----	----	----	----	----	----	----	----	----	----	----	-------

Stations

HYDRO Stations	77	53	6	6	46	43	123	16	4	164	26	27	13	20	624
METEO Stations	78	62	6	1	214	12	14	6	3	158	15	7	22	17	615
Total stations	155	115	12	7	260	55	137	22	7	322	41	34	35	37	1239

Attributes

Availability

River*	77	51	6	6	44	43	123	0	0	164	26	27	13	0	580	93%
River-KM*	77	2	3	6	46	0	123	0	0	1	26	27	13	0	324	52%
Catchment*	77	46	3	6	46	0	121	0	0	21	26	27	13	0	386	62%
Subbasin	155	101	12	7	44	0	137	0	0	322	26	34	35	0	873	70%
Vertical reference	155	104	12	7	52	43	137	0	2	322	41	34	35	1	945	76%
Gauge zero/Altitude	155	66	12	7	44	43	137	0	0	322	41	34	35	0	896	72%
Related Station**	0	7	0	0	0	0	0	0	0	0	0	0	22	0	29	5%
Q100*	0	19	0	6	0	0	0	0	0	0	0	0	13	0	38	6%
Low water level*	0	0	0	6	0	0	0	0	0	0	0	0	13	0	19	3%

* attributes only relevant for HYDRO stations

** attributes only relevant for METEO stations

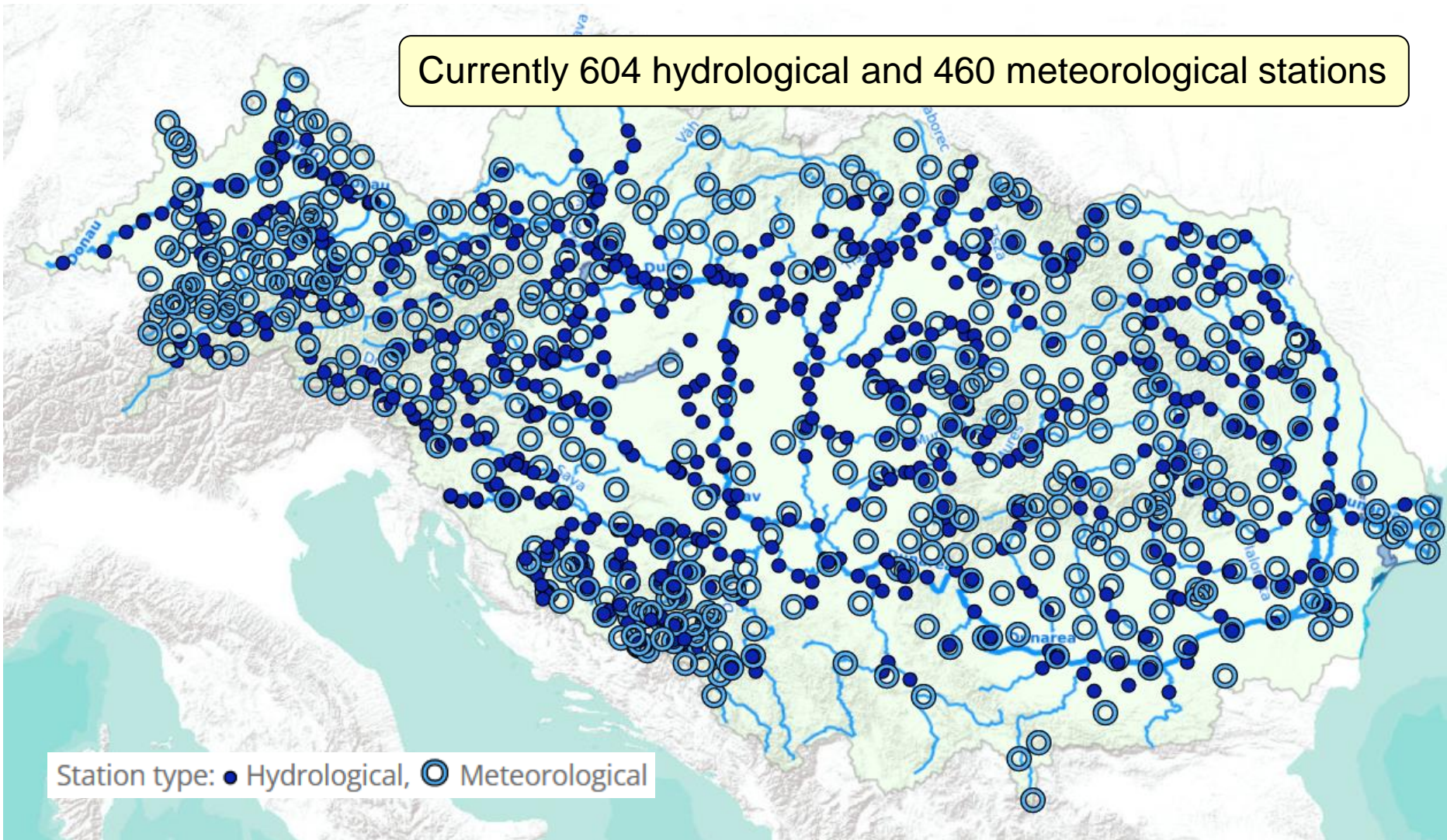
Data synced from DanubeGIS

Data in DanubeHIS Distribution Node

Overview map of stations

Currently 604 hydrological and 460 meteorological stations

Station type: ● Hydrological, ○ Meteorological



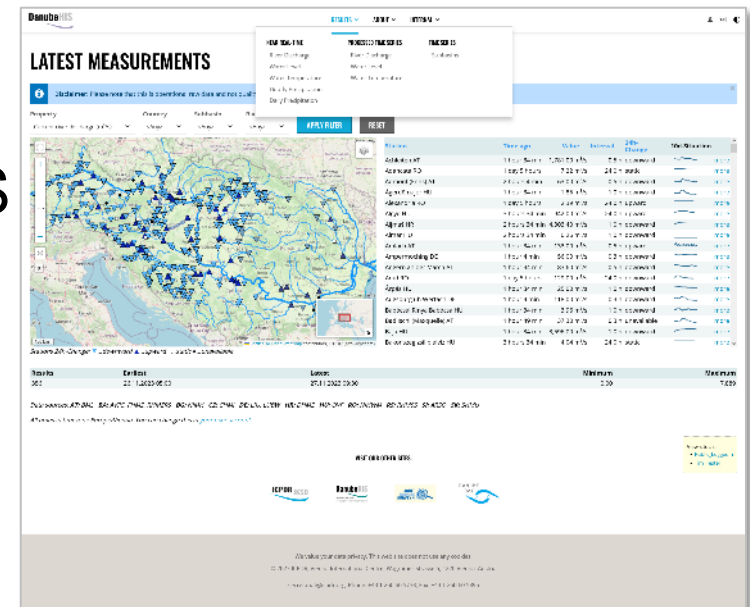
DanubeHIS portal features



International Commission
for the Protection
of the Danube River

Internationale Kommission
zum Schutz der Donau

- Stations map including DanubeGIS background layers and change indicators
- Filters for country, subbasin, river
- Near real time and processed time series data
- Stations metadata
- Online charts
- Data download in WML, CSV, XLS
- Navigation, layout and design based on icpdr.org website



Thanks for your attention!



Please visit

<https://www.danubehis.org>

Contacts:

alex.hoebart@icpdr.org zoran.major@icpdr.org