



Financing the UN Early Warning for All Initiative - a Fit-For-Purpose CREWS



Content

- ❑ Financing to Scale
- ❑ Better financing
- ❑ Access to finance by NMHSs

WMO TECHNICAL CONFERENCE ON: THE UN GLOBAL EARLY WARNING INITIATIVE FOR CLIMATE ADAPTATION: EARLY WARNINGS FOR ALL

Geneva, Switzerland, 22 October 2022

CREWS Members



Australia



Finland



France
(Chair)



Germany



Luxembourg



Netherlands



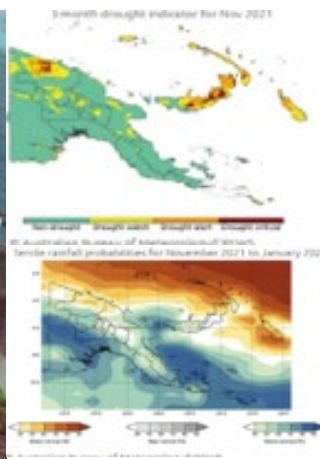
Switzerland



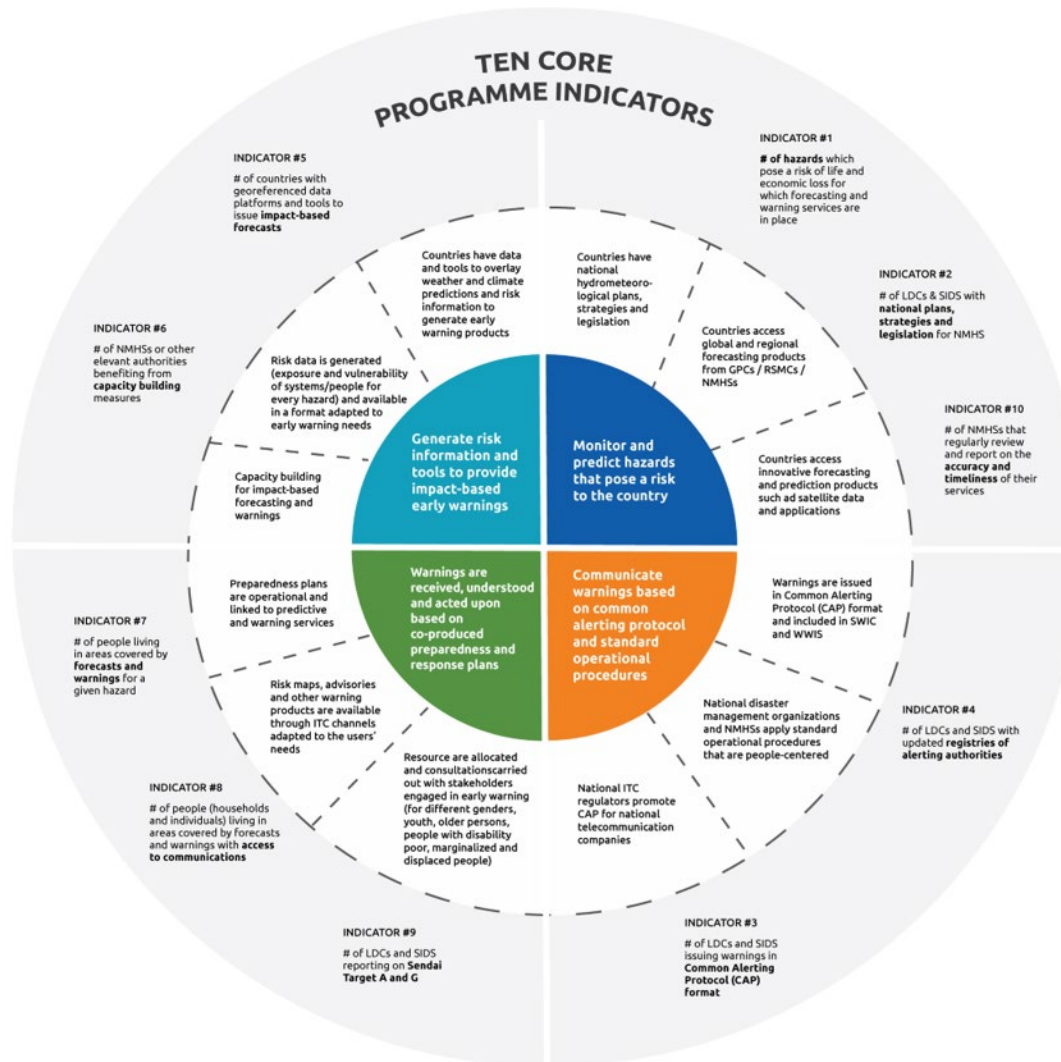
United Kingdom

Programmatically aligned with EW for All

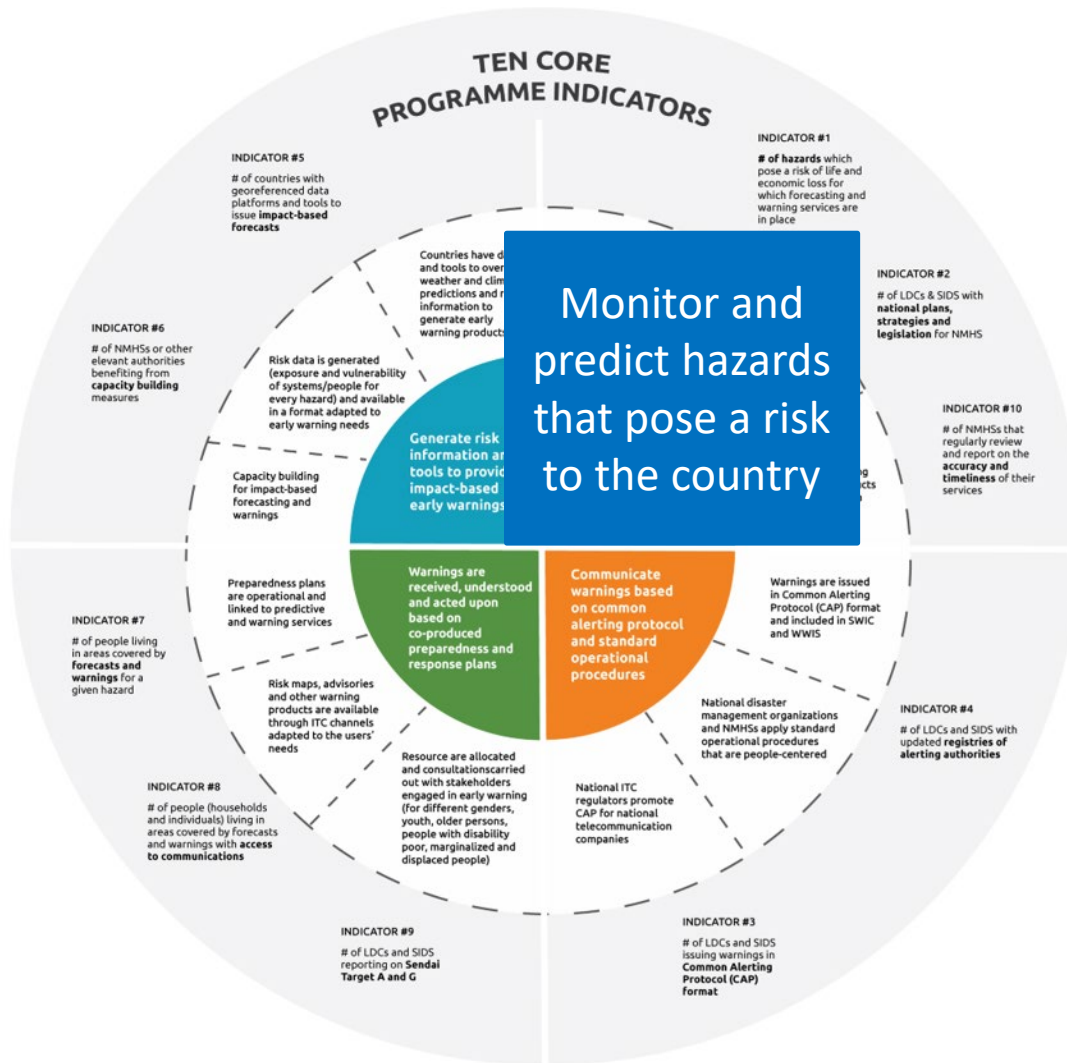
- ❑ Support to Members is through established WMO service lines and programmes
- ❑ There is not a “CREWS” approach to supporting Members and a “WMO” way. CREWS funds the work of the WMO Departments, Regional Office and related mechanisms in support of Goal 3, WMO Strategic Plan 2020-2030



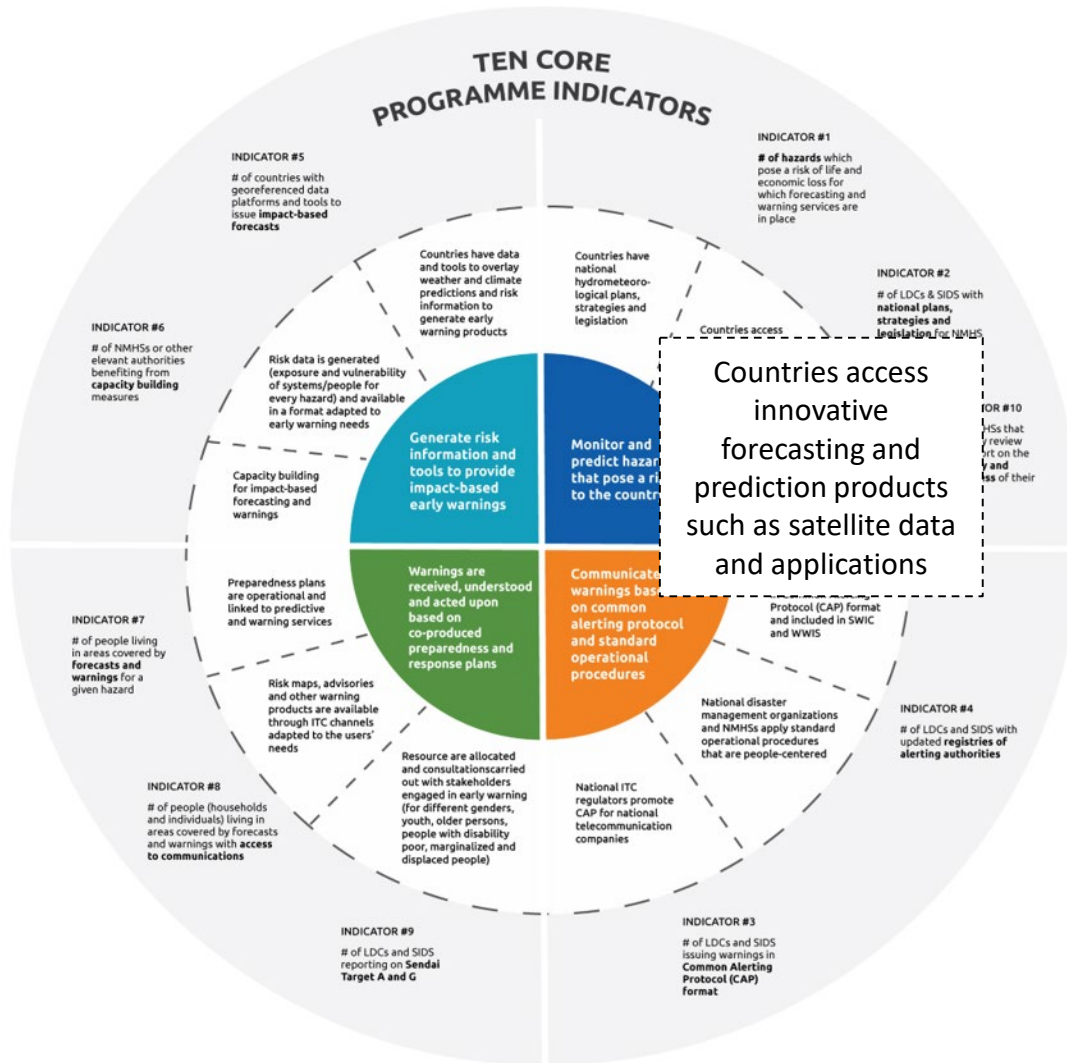
Programmatically aligned with EW for All



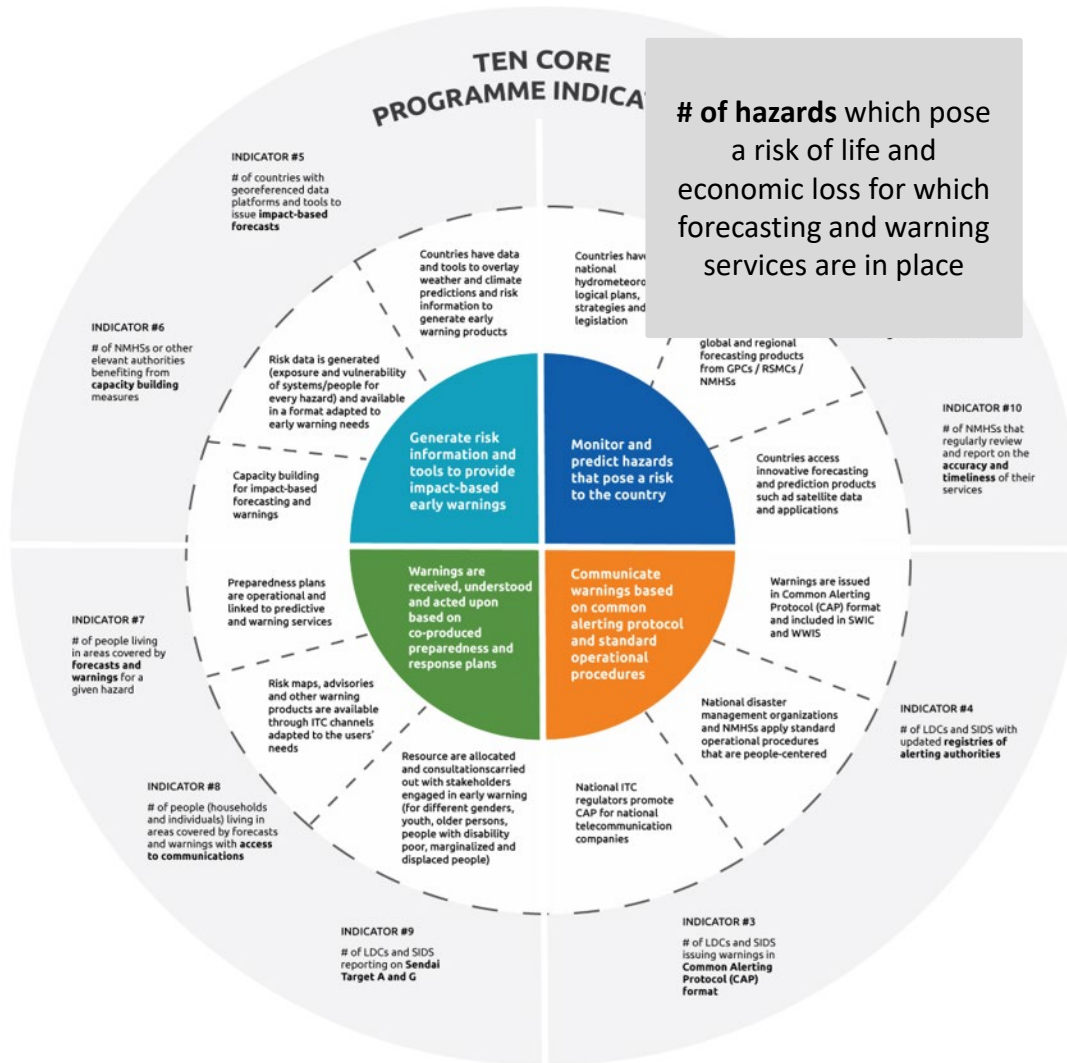
Programmatically aligned with EW for All



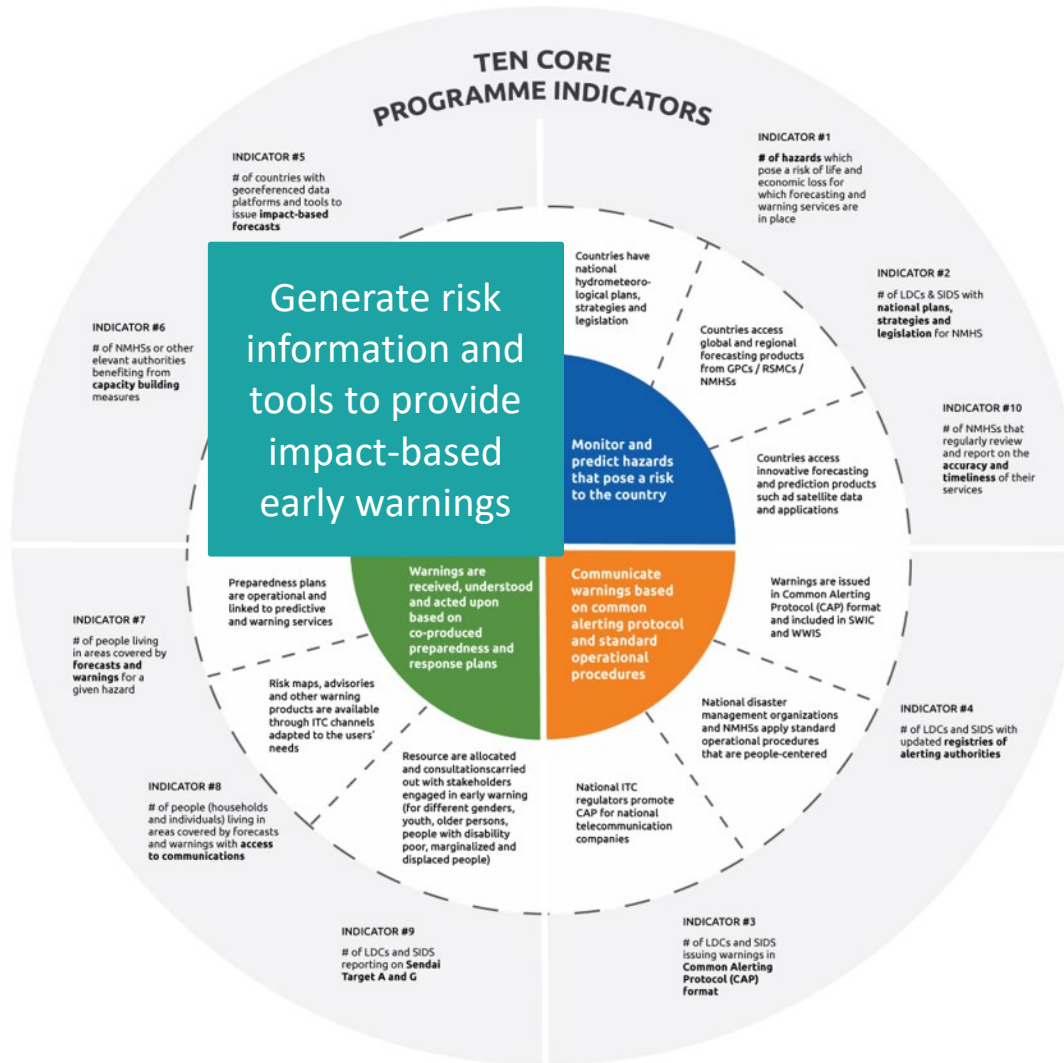
Programmatically aligned with EW for All



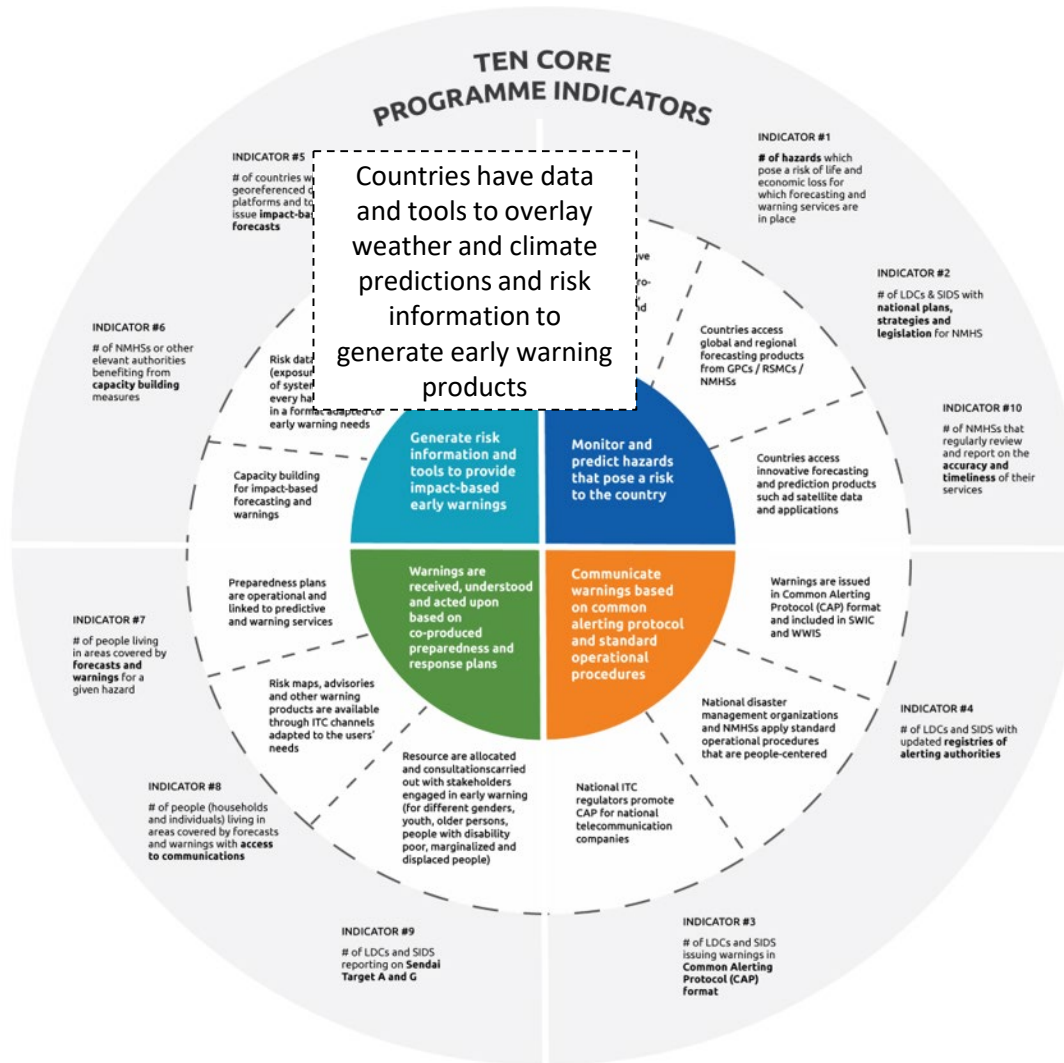
Programmatically aligned with EW for All



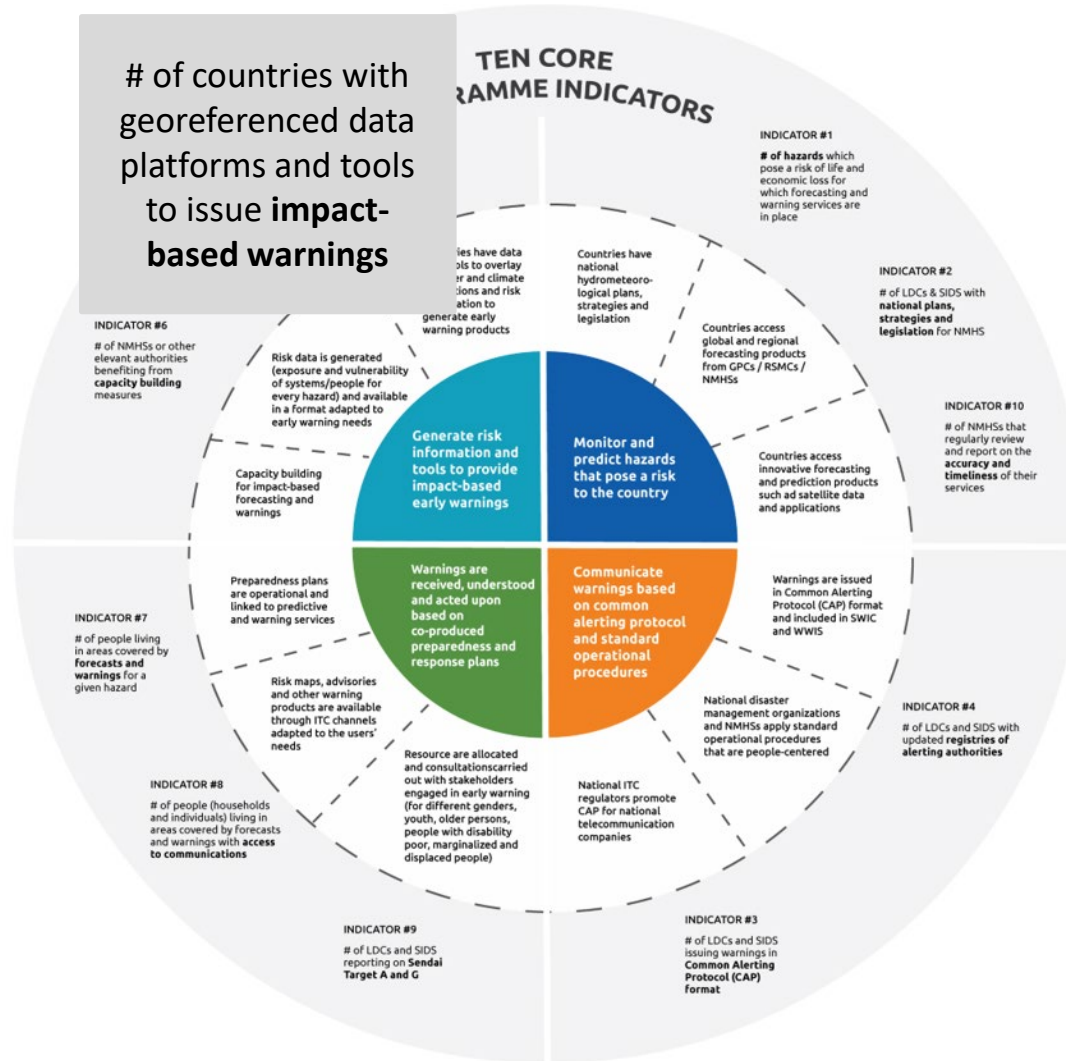
Programmatically aligned with EW for All



Programmatically aligned with EW for All



Programmatically aligned with EW for All



Example - Papua New Guinea, USD 1.56 M, implemented by BOM, aligned with COSPPac funding

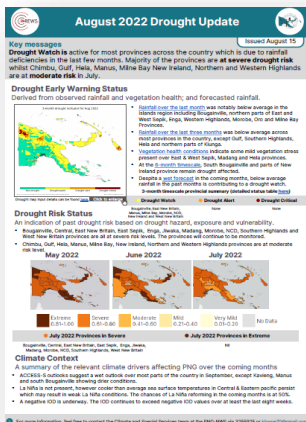
Low observation station coverage - 13 weather and climate stations and 7 rain gauges.

Drought monitoring capacity developed through WMO's Space Based Weather and Climate Extreme Monitoring programme (SWCEM) with support from JAXA and NOAA - drought index established (indices SPI, NDVI, VHI)

↳ Drought risk maps produced for 22 PNG province

↳ National Weather Agency and Disaster Management Office produce monthly Drought Updates

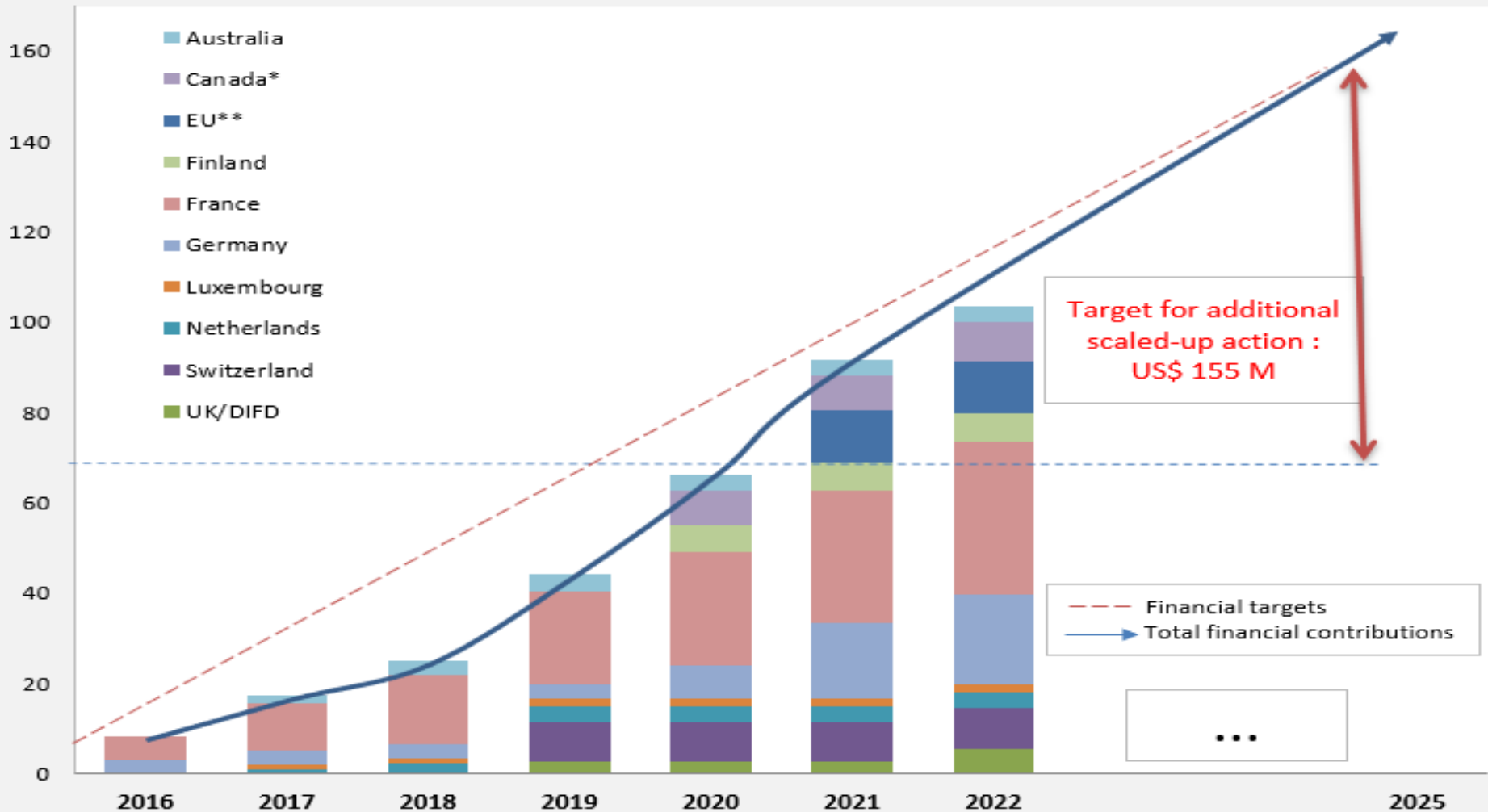
↳ Impact-based warning services tailored for three users' groups, energy, water and agricultural sectors – with metrics on socio-economic benefits



Financing to Scale, Better Financing and Access for NMHSs

- ❑ Financing mechanism that are country-owned and respond to country needs
- ❑ Balanced financing across the early warning value cycle
- ❑ Ensure financing for early action through people-centred, risk-informed approaches
- ❑ Incentivizing private sector actors to play a role
- ❑ Use pooled financing mechanism
 - ❑ Ensuring a coordinated approach, reducing duplication, fragmentation
 - ❑ Continuous learning and 'agile' development
 - ❑ Lowers risk and overheads

Financing to Scale, Better Financing and Access for NMHSs



*: Canada initially contributed to CREWS WMO and is now contributing to the CREWS FIF.
 **: The European Commission is contributing €10 million to the CREWS initiative through GFDRR.

Financing to Scale, Better Financing and Access for NMHSs

- ❑ Increase investments in early warning (CREWS, SOFF, World Bank and regional development banks, GCF)
- ❑ Increase effectiveness and use funds to leverages and increase access to additional financing
- ❑ A GCF/CREWS Scaling-Up Framework on Early Warning
 - ❑ Linked to the GCF Simplified Approval Process (SAP)
 - ❑ Fast-track projects that scale up previously successful CREWS projects
 - ❑ Initial target is for 20 countries to access SAP funds of up to USD 25 million for early warning by 2027

Thank You

CREWS Members



Australia



Finland



France
(Chair)



Germany



Luxembourg



Netherlands



Switzerland



United
Kingdom

CREWS Observers



Canada



Japan



Mexico



New Zealand



Norway



Spain



ACP



European
Commission



IFRC



UNDP



USAID

CREWS Implementing Partners



WORLD
METEOROLOGICAL
ORGANIZATION



WORLD BANK GROUP



GFDRR
Global Facility for Disaster Reduction and Recovery



UNDRR
UN Office for Disaster Risk Reduction



@CREWSinitiative